

## Rod Drilling Jig

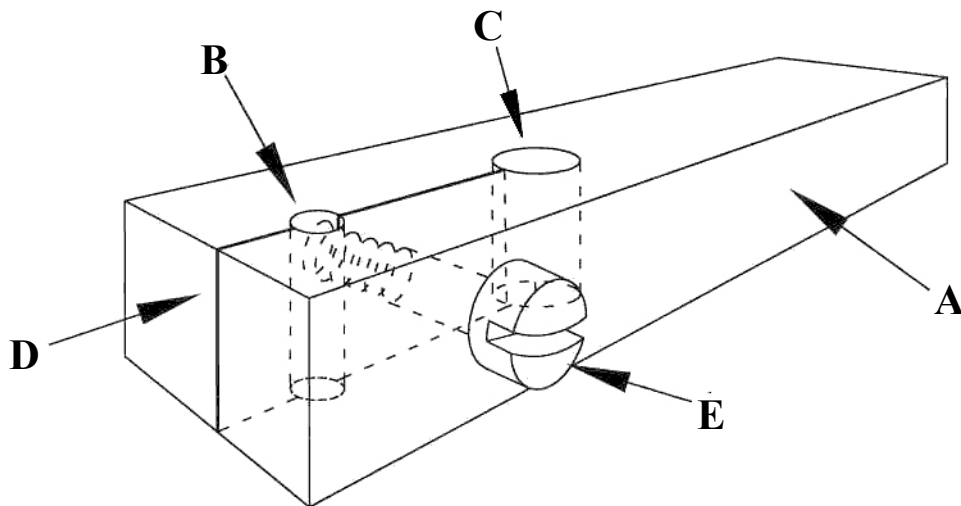
**A:** 1/4 x 1/4\* thick plastic (ABS or styrene) approx. 2" long.

**B:** Drill hole through for desired rod diameter.

**C:** Drill 1/8" diameter hole through where bottom of slot will be located.

**D:** Cut slot using .012" thick hobby saw (or equiv.). Make sure slot is parallel to, and centered on hole B.

**E:** Drill & tap (or use nut on backside) for clamping screw (2-56 or equiv.). Locate this hole slightly below hole B (toward hole C).



**\*To insure rod segment is fully supported during drilling, thickness of jig should be equal to, or greater than depth of hole being drilled in rod, or length of rod segment if drilling entire rod length.**